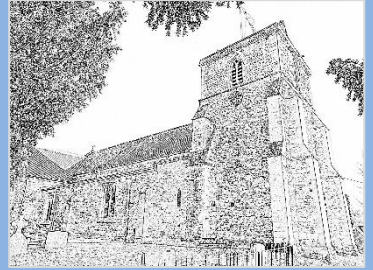


Parish Church & Community News



**Stone | Dinton | Ford | Upton | Hartwell | Bishopstone | Aston Sandford
Parishes within the Benefice of Wychert Vale**



In this month's issue

- 125 years of Marylebone Station
- Ride n Stride event
- Local events and meetings



USEFUL PARISH CONTACTS

WYCHERT VALE BENEFICE



Benefice Rector

Revd Cassa Messervy



Associate Rector

Revd Canon Dr Phil Groves
01296 748390
drphilgroves@gmail.com

Associate Minister

Revd Nigel Featherston
Tel: 01296 747454
nfeatherston@btinternet.com

Curate

Revd Clare Joyce
07507 706668
revclarejoyce@gmail.com

Benefice Administrator

For all baptisms, weddings and funerals:
Benefice Office, St Mary's Centre, Station Road, Haddenham, Aylesbury, HP17 8AJ.
office@wychertvale.org | office@haddenhamstmarys.org

St John the Baptist, Stone

Trainee Licensed Lay Minister – Richard Smith | richard.smith@stonedintonhartwell.com
Churchwarden – Raymond Medhurst | raymond.medurst@stonedintonhartwell.com
Churchwarden – Sue Birrell | s.birrell@stonedintonhartwell.com

St Peter and St Paul, Dinton

Churchwarden - Rosemary Jackson | 01296 748655 | 07751 393377 | jacksonrj@btinternet.com

Treasurer (Stone & Dinton)

treasurer@stonedintonhartwell.com

St Michael & All Angels, Aston Sandford

Hon Treasurer - Marilynne Morgan | 4mam.morgan@gmail.com
Churchwarden - Nick Morgan | 01844 291217 | 4nick.morgan@gmail.com
Churchwarden - Laura Macpherson | lauramacpherson52@gmail.com

Front Cover Image: Harvest Mouse (credit: Photo by Glen Hooper on Unsplash)

Editorial

The school Summer holiday seems to stretch out for ever when it begins, but gradually the start of school looms large again, to the upset of children possibly and the relief of parents (sometimes). Towards the beginning of September we think getting ready for the new academic year as every September means a new class, new teachers and possibly new school or college.

The academic year begins in late Summer because children were busy through the early Summer months, mainly working in fields or elsewhere. Holidays were not routine for most people/ School was not compulsory until 1880 and at that time children worked in fields and factories like their parents. Through the winter months there was less to do. In many communities it would be the boys of 10 to 13 that would do the shepherding and be away for days or more at a time. Younger children would help in the home looking after their siblings and doing laundry while older children and parents took on the physical labour.

Education Sunday this year is 8 September. Here is a special prayer,

Lord Jesus, You came to earth as a teacher, using stories to instruct.

We pray for the teachers, assistants and administrators;

The helpers who ensure the students can flourish.

We pray for the learners, As they absorb new information,

Gain new skills and,

Discover their particular route through education.

We pray for schools, colleges,

Universities and all places of education around the world.

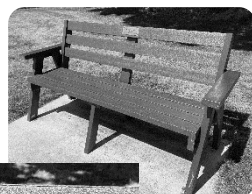
May they be safe places, Filled with inspiration and aspiration.

Amen.

In memory of Carole Fryer

With very many thanks to everyone who supported the concert in memory of Carole Fryer. £180 was raised for Thames Valley Air Ambulance.

'Rest a while' – memorial bench in the park in Stone in memory of Carole



Parish Services and Calendar

September 2024	St John the Baptist Stone	St Peter & St Paul Dinton*	Stone Methodist Chapel	St Michael & All Angels Aston Sandford
Sunday 1st September	9.00am Matins 10.30am Holy Communion	9.00am Holy Communion	11.00am Worship	
6.00pm Evensong at Hartwell – all welcome				
Sunday 8th September	10.30am Family Service	6.00pm Evensong	11.00am Worship	
Sunday 15th September	9.00am Matins 10.30am Morning Worship + Explorers	No service at Dinton	11.00am Worship	11.00am Holy Communion Service
Sunday 22nd September	10. Holy Communion	9.00am Holy Communion	11.00am Worship	
Sunday 29th September	11am Songs of Praise united service at the Methodist Chapel			
Sunday 6th October	9.00am Matins 10.30am Family Service	9.00am Holy Communion	11.00am Worship	

Changes/more details can be found in the churches' noticeboards and the website

Parish & Community News : News team

Editor:	David Pickup	01296 748170	david@pickupandscott.co.uk
Advertising:	Sue Unwin	07760 177599	sunwin1958@hotmail.com
IT Producer:	Heather Harris	07766 086280	hevsharris@aol.com
Distributor:	Fiona Rysdale	01296 747663	therysdales@live.co.uk Readership:
Readership:	Ruth Jeffery	07792 734116	ruth@computing4u.net

Parish News is a community magazine for the residents of Stone, Dinton, Ford, Upton, Bishopstone, Hartwell and Aston Sandford. We welcome news, announcements by societies and clubs, and articles on local and other issues. We do not charge for charities or personal notices such as weddings, baptisms or acknowledgments and welcome advertising by local businesses

Change to church service pattern at St Peter & St Paul, Dinton

There will be a change of service pattern at SPP which was agreed at the recent PCC meeting.

From September we will have three Sunday services regularly each month as usual, but the third Sunday service will now happen on the fourth Sunday starting at 9am. The small congregation would like to go back to using the Side Chapel for the fourth Sunday Holy Communion Service.

New pattern

First Sunday	9am	Holy Communion
Second Sunday	6pm	Evensong
Fourth Sunday	9am	Holy Communion

Harvest Festival will be on 13th October at 6pm with drinks and nibbles afterwards.

Remembrance Service will be at 10am on Sunday 10th November. There will also be an Evensong at 6pm on that day. .

Carol Service will be on 8 December 2024 followed by refreshments and the drawing of the winner of the Turkey Raffle.



A reminder that this year's Ride and Stride event, organised by Buckinghamshire Historic Churches Trust, is on **Saturday 14th September**. Don't forget that your church gets half the amount raised (including half the gift aid) by any sponsored rider or walker who names your church – and that your church can earn extra funds by sponsoring a team of sitters in the church to welcome participants, and maybe hand out welcome glasses of water. Why not participate yourself or sponsor someone else – it is SUCH a good cause, and has benefitted, and continues to benefit, all the churches in our benefice

See <https://www.bucks-historic-churches.org/ride-stride/> for further details, including how to donate through Just Giving, and for suggested routes. Route 1 for cyclists, and routes 1 and 2 for walkers, contain a number of churches in our benefice (including Aston Sandford) – so prepare for visitors!

News from Aston Sandford

125 at Marylebone Station

It may well have escaped your notice that earlier this year Marylebone Station, aka London Marylebone, was 125 years old: it had been ceremoniously opened on 9th March 1899, before passenger trains started using the station on 15th March 1899. Marylebone was the last of the main line termini in London, and by a long way – in the last termini to have been opened, in 1874, were Liverpool Street and Holborn Viaduct (now City Thameslink Station between Blackfriars and Farringdon, but originally a terminus in its own right providing services to Kent), neither of which was the terminus of a new line. Essentially Marylebone was built as the terminus of a 90 mile plus extension to London of the Manchester, Sheffield and Lincolnshire Railway, which changed its name in 1897 to the more catchy Great Central Railway (GCR) – and that extension was the last main railway to be built in the UK for a century.

The station itself was designed by Henry William Braddock, a civil engineer for the GCR, and has a pleasant, gabled look, not unlike the Queen Anne style championed by Norman Shaw. It was a modest design owing to the financial difficulties GCR ran into. For the same reason the station itself was reduced from the original plan of eight to four platforms (platforms 5 and 6, which feel as if one is walking to and from Neasden, are recent additions). The hotel, now the Landmark London, attached to the station by the beautifully restored Grade 2 listed *porte cochere*, was part of the original scheme, but owing to the same financial problems it was sold to Sir John Blundell Maple, of the Maples furniture store, who opened it as Hotel Grand Central in 1899 - decorated and furnished by Maples of course. Nevertheless the opening of the station was very grand - accompanied by a military band, a 6 course lunch was served to 734 people in a marquee erected across ends of platforms 2 to 4. The actual ceremonial opening was undertaken by the President of the Board of Trade.

At the time of the opening Marylebone served few stations in Buckinghamshire. This is not to say that there were no railways in Buckinghamshire, far from it. In 1838 Aylesbury was the first town in the county to get a railway – an extension from Cheddington on the London Euston/Birmingham route which had been built by George Stephenson and is still in use today. The history of lines through our part, indeed any part, of the county is complicated. Suffice it to



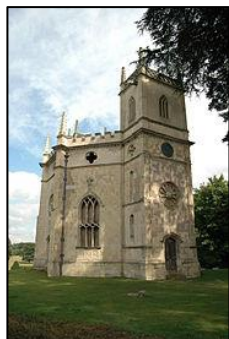
say that High Wycombe station was opened in 1854. Saunderton, Princes Risborough and (the original) Thame stations were opened in 1862 (Little Kimble in 1863) as part of a scheme to bring connections between Wycombe, Maidenhead, Marlow, Oxford and Aylesbury. Known as the Wycombe Railway, which came under the aegis of the Great Western Railway (GWR), access to London was via Maidenhead or Aylesbury. The original GWR was always known as Great Way Round!

What happened in the 1890s was that GCR constructed a new, highly engineered railway from Annesley in Derbyshire, via Nottingham, to Quainton Road and Aylesbury, whence it followed the Metropolitan Line into London. To get to the new terminus at Marylebone there was a two-mile GCR section from Canfield Place (near Finchley Road station). The Parliamentary Bill to authorise the route nearly failed due to opposition from the MCC at Lords, and only succeeded because it was agreed to put the line through a tunnel under the grounds: in fact three running tunnels were built. The first sod of the new railway was cut at Alpha Road, St John's Wood, London, on 13th November 1894 by the wife of the chairman of the board.

It was not until 1905 that the route into Marylebone from High Wycombe via Beaconsfield and Gerrards Cross was completed. This was a joint venture between GWR, owner of the Wycombe line, and GCR. The 'Joint' lines were from Grendon Underwood to Princes Risborough (via of course Haddenham) and from High Wycombe to Northolt Junction. At Northolt GCR built the connection to the Metropolitan line at Neasden Junction, and GWR built two connections to the main line into Paddington (including the route via Castle Bar to Old Oak Common and Ealing Broadway which the older commuters among my readers may remember from the one a day fast train into Paddington). The Joint line through our part of Bucks opened for passenger traffic in 1906, with the new stations in the GWR style.

Needless to say the building of the Joint lines was costly, being well over budget - and added to GCR's financial problems resulting from the original route into London. In the end, neither the new lines nor the original GCR line were a great financial success. It is perhaps ironic that GCR's main success was with freight traffic, particularly coal. As the trade for coal declined in the 1950s and 1960s Marylebone, and its lines, were under constant threat. But there was huge public pressure to save Marylebone – it was one of John Betjeman's favourite stations (forget St Pancras!) and a great favourite with film makers – did you know the Beatles were there filming *A Hard Day's Night* in 1964? I for one am glad it was saved. It is not surprising that the building is one of London's favourite stations. Happy Birthday, Marylebone.

**Marilynne A Morgan, Treasurer, Aston Sandford Church
Trustee Buckinghamshire Historic Churches Trust
Chairman, Friends of Buckinghamshire's Historic Churches**



Evensong Service
Sunday 1st September 2024
at 6 pm
By kind permission of Hartwell House, Oxford Rd.
Aylesbury, Bucks. HP17 8NR

The traditional and very popular Common Prayer service takes place out of doors, in front of Hartwell Church. This spectacular and romantic mid-18th-century church is built in the 'Gothic' style. The church was built between 1753 and 1755 to a design by Henry Keene for Sir William Lee. It is situated in the landscaped grounds of Hartwell House, now a luxurious country hotel. Henry Keene designed the church for Sir William Lee. It is octagonal with east and west towers, and is thought to echo the chapter house at York Minster.

Please bring your own chair *For more information david@pickupandscott.co.uk*

**u3a General Meeting at Haddenham Village Hall
Tuesday 10th September 2024 2.15pm**

**“No tolerance of undeserving rank and splendour”
The wit and satire of Gilbert & Sullivan**

Speaker: Dr Stephen Goss

Stephen is an academic historian and through his talk you will discover the witty commentary on contemporary society, uncover the thinly veiled satire of some of the plots and unmask the characters who were parodies of certain Victorian politicians and notables. The talk provides context to the operas and gives an insight into British society, history, culture and world view in Victorian times.

**Visitors who may like to find out more about the local u3a are welcome to have a taster visit, before joining, at no cost.
Members are able to join any of the 30 interest groups, ranging from book clubs to walking groups, details of which can be found on the website.**

To find out more about the u3a and join, please contact Elaine Parkes, Membership Secretary, membership@haddenhamu3a.co.uk, or visit our website www.haddenhamu3a.co.uk

Fourth Tuesday Fellowship and Thursday Club outing on 8th August

The Fourth Tuesday Fellowship, The Thursday Club and friends, were treated to an Outing to Bedford for a trip on the John Bunyan Community boat 8th August. The Coach trip though delayed transported us all to the departure point but a small hiccup there caused a time delay of the departure. Fortunately the volunteer run boat arrived but over 30 minutes late and we departed from the Marina. The slow but comfortable trip showed holiday/house boats and Homes on the River Bank, we progressed on the River while being served with a Cream Tea and refreshment. We went through a Lock which was incredibly difficult to navigate as it is the longest Boat allowed to sail. The Bedford Lock took us to the main river course through the town Centre where another group left the Boat we made the return voyage.

The timetable was considerably delayed but everyone enjoyed the food and historical information during the voyage.

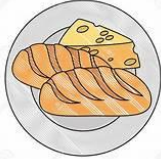
With many thanks to the Organisers Sue Spinks, Dee James and valued assistant Gail for their expertise. All the members of the two Groups are extremely grateful to both the Parish Council and the Fete Committee for their very generous support funding which covered the cost.



SUPPER & GRAFFITI

Everyone is welcome to come along to St John The Baptist Church on Saturday 5th October, 5.30pm.

We are celebrating Harvest with a supper followed by a talk on the ancient Graffiti in the church.



Supper will be provided for a Donation and then after a short talk there will be a chance for you to find the graffiti yourself and to try and decipher it.



YOU WILL BE AMAZED AT WHAT YOU WILL SEE!!

More details will follow but Save the Date

Unpacking the Bible Studies

We have had a number of requests recently from church members for an opportunity to find out more about the Bible.

During the Autumn, Revd Phil Groves and Richard Smith will be leading fortnightly sessions on a Thursday evening at 8pm starting on 12th September. The sessions are open to those of any faith or none and aim to stimulate discussion rather than to provide all the answers. The programme outline is as follows:



September 12th: How did the Old Testament come to us in its present form? (Phil Groves)

September 26th, October 10th and 24th: Power and politics: have we learned anything in 3000 years? A dip into the books of Kings. (Richard Smith)

November 7th: How did the New Testament come to us in its present form? (Phil Groves)

November 21st and December 5th: The life and teaching of Jesus in a nutshell: the Gospel of Mark. (Phil Groves)

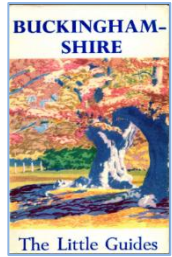
Details of venue will be published in the Church weekly pewsheet and on the website: www.stonedintonhartwell.com

For details contact Phil Groves or richard.smith@stonedintonhartwell.com

BUCKINGHAMSHIRE THE LITTLE GUIDES BOOK

First published in 1903 revised 1950

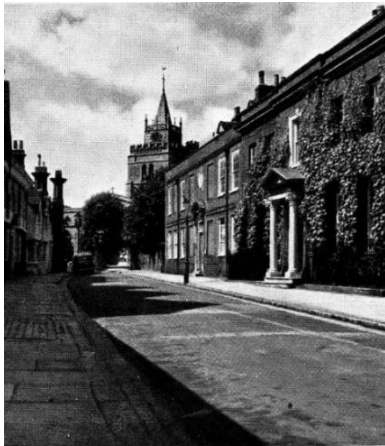
(Continuing in our series of extracts from 'Buckinghamshire – The Little Guides')



AYLESBURY (Anglo-Saxon Aeglesburgh)

Aylesbury the county town was one of the strongest British fortresses which fell to the Saxons in 571. At a later date it became famous through its connection with three holy women, St. Editha and St. Edburg, daughters of a Mercian prince, and their niece St. Osith. At the time of the Domesday survey the manor of Eilesberia belonged to the Crown, but, in 1204, King John granted it to Fitz Piers, Earl of Essex - later it went to the Botelers, and by female descent came to Thomas Bullen father of Anne Boleyn who sold it to Sir John Baldwin, Knt., whose son-in-law, Robert Packington came into possession in 1545 and his descendants continued to hold it till 1802. The Packingtons sold the manor to the Marquis of Buckingham who held it till 1848. During the civil wars the town became a parliamentary stronghold and was for a time the headquarters of Essex and more than one vain attempt was made by the Royalists to seize it.

The town stands on a slight eminence in the rich vale which bears the same name and spreads itself out from the old market square, the south side of which is formed by the County Hall (building in 1720 onwards from designs by Harris and containing a fine Court Room) and New Corn Exchange. The handsome county offices in Walton Street were opened in 1929.



6 AYLESBURY: CHURCH STREET WITH THE COUNTY MUSEUM AND CEELEY HOUSE ON THE RIGHT

Aylesbury contains a number of interesting old houses. The most remarkable is the Kings Head Inn at the north west corner of the Market Square. This, though still used as an inn is now National Trust property and dates from the 15th century. The hall is a fine specimen of mediaeval work and has a large window still retaining some original glass among which may be distinguished the arms of Henry VI and Margaret of Anjou. There are various old courts and alleys to the west of the Market Square where is situated the romantically named 'Dark Lantern Inn'. Church Street, Temple Square and Castle Street contain some admirable 18th century frontages, some, particularly in Church Street, masking earlier buildings.

The County Museum maintained by the Bucks Archaeological Society is in Church Street is an early 18th century house, formerly the Grammar School.

The adjoining premises, Ceely House, have also been acquired for conversion into museum purposes. There is now an excellent Library and Muniment Room and a collection of specimens from the county representing all periods from the Stone Age.

There are also particularly important collections of 17th century trade tokens, bygones, and exhibits illustrative of the Bucks lace-making industry, as well as natural history specimens. (museum open daily, admission 6d children 3d free to members of the Bucks Archaeological Society)



The church of St. Mary is built partly on the site of an ancient, probably Saxon, church. It is a fine cruciform structure, and was completely restored in 1850 by Sr Gilbert Scott. On the whole, it must be regarded chiefly as Early English in character. Note on the exterior the fine west EE doorway, in the south porch the EE arcades and the perp doorway to south transept. The interior, which has all the specious but rather cold character of EE architecture, is full of interest, and presents a

different appearance to what it must have borne before its restoration, for during the Commonwealth arches were blocked up and other acts of disfigurement perpetrated. The chancel (with modern triplet window) is Early English. With a few later additions, as are also the arches, with water rims to bases and dog-tooth ornament on east side of south. transept, the beautiful triforium of central tower, the arch, niche, and piscina on east wall of north transept (at present used as a vestry), the arcading in nave and one window in south aisle. In the chapel of north aisle are two 13th century stone coffins in a double decorated niche and a piscina on east wall. A beautiful font (Norman) stands in the south aisle and gives its name, Aylesbury, to a type found in several churches in Buckinghamshire and the adjacent counties. The north vestry (15th century) is entered from the north transept, and on one of the original doors is still to be seen a remarkable lock turned by a winch key, above this is a small room with a curious old fireplace.

The monument to Lady Lee, wife of Sir Henry Lee 1584, in the north transept is a fine example of Elizabethan sculpture. Lady Lee is depicted kneeling, behind her is a girl in the same attitude, two infants in swaddling clothes lie near, the inscription describing her virtues and life shows how general had become the heroic and archaic verse which we generally associate with Faerie Queen. This monument was brought from a disused church at Quarendon, near it, in a recess is an alabaster effigy of a knight in a coat of mail removed from the site of the Grey Friars' Monastery.

The Prebendal House stands to the west of the churchyard. It was for some time the property of John Wilkes (1727-97) through his marriage with Mary Mead, whose father, a wealthy tradesman of London, was its owner. The marriage was an unhappy one for Mrs. Wilkes, but through it Wilkes was elected member for the borough in 1757. Lord Chancellor Westbury, then Mr. Bethell was at one time M.P for Aylesbury, as was John Lyly in 1593 and 1601. In Parson's Fee, the street on the south side of the churchyard, are several houses dating from the 16th and 17th centuries.

Near Aylesbury, the first Point to Point Steeplechase in England was run in 1835, from Waddesdon Windmill to a field just below Aylesbury Church.

Stone Village Library

In the bus stop near the village hall there are now two cupboards that comprise the Stone Village library. Currently, the cupboards contain a selection of books for all ages.

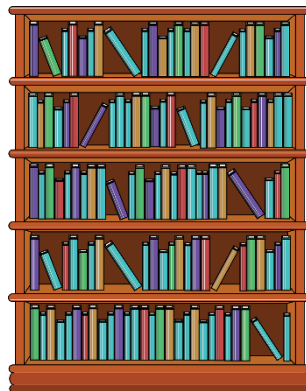
Please feel free to borrow the books as required. Also please return the books when you have finished with them.

I am always looking for more books to keep the library fresh with new titles.

My intention is to try to start a jigsaw library as well.

If anyone has any books or complete jigsaws that are surplus to requirements that they could donate, please contact me using the details below:

Peter Gillespy, mobile no 07914 006623 and email address peter@gillespy.plus.com



Parish and other websites

Parish Church	https://stonedintonhartwell.com/
Stone with Bishopstone and Hartwell Parish Council	http://www.sbhpc.org/
Jubilee Pavilion	http://www.sbhpc.org/Jubilee-Pavilion/Jubilee-Pavilion-Home
Dinton with Ford and Upton Parish Council	https://www.dinton.org/
Dinton News	https://www.dinton.info/
Wychert Vale Benefice Website	https://www.wychertvale.org/
Oxford Diocese (The Church of England serving the people of Oxfordshire, Berkshire and Buckinghamshire)	https://www.oxford.anglican.org/
Church of England	https://www.churchofengland.org/

Wildlife Spotlight – Bats in Buckinghamshire



Buckinghamshire's nighttime skies are home to some fascinating nocturnal residents—bats. These small, often misunderstood creatures play a crucial role in our ecosystem, helping to control insect populations and contributing to biodiversity. In Buckinghamshire, several bat species have made their homes, each with unique behaviours and habitat preferences.

Species of Bats in Buckinghamshire

The most commonly spotted bats in Buckinghamshire include the Common Pipistrelle, Soprano Pipistrelle, Brown Long-Eared Bat, and the Noctule. The Pipistrelles, the smallest British bats, are often seen flitting around at dusk, hunting for midges and other insects. Brown Long-Eared Bats are recognized by their large ears and are known for their agility, able to snatch insects from foliage with remarkable precision. The Noctule, one of the largest British bats, is a powerful flier, often seen high above the treetops, catching larger insects like beetles.

Habitats and Roosting

Bats in Buckinghamshire find roosts in a variety of natural and man-made environments. Woodlands, hedgerows, and ancient trees provide essential roosting sites, particularly for species like the Brown Long-Eared Bat, which favours woodland habitats. Old buildings, churches, and barns are also significant for bats, especially the Pipistrelles, which often roost in the crevices of roofs or behind fascias. These structures provide the warmth and security bats need to raise their young.

Water bodies, such as the rivers and lakes scattered throughout Buckinghamshire, are vital hunting grounds. Bats frequently forage over water, where insects are plentiful. The combination of diverse habitats—woodlands, water bodies, and open countryside—makes Buckinghamshire an ideal place for a variety of bat species.

Human Impact on Bat Populations

Human activities significantly influence the lives of bats in Buckinghamshire. Urban development, agricultural practices, and changes in land use can all disrupt bat habitats. The loss of hedgerows, woodland, and mature trees reduces the availability of roosting sites and feeding grounds. Light pollution is another major issue, as it can interfere with bats' nocturnal activities, particularly for species that prefer to hunt in darker conditions.

However, local conservation efforts are making a difference. Projects aimed at preserving natural habitats, creating bat-friendly environments, and educating the public about the importance of bats are helping to protect these nocturnal creatures. Simple actions, such as installing bat boxes, reducing garden lighting, and preserving old trees, can provide vital support to Buckinghamshire's bat population.



**EYAI
Community
Café**

At Stone Village hall

Fridays 1pm to 4pm

Now available
take away & bistro coffee

ALL WELCOME

CHARITY NO: 1195406



EYAI
Enhancing Young
Adults Independence

EYAI (Enhancing Young Adults' Independence) provides young adults with practical training alongside Mentoring to support them to gain employment, confidence and independence.

We have opened an EYAI community café at Stone Village Hall on Fridays between 1-4pm providing training for our clients prior to working in the wider community alongside providing an afternoon café for the local community.

Please come and visit us to find out more.

Contact: 07833 93838 E-Mail: team@eyai.co.uk Web: http://eyai.co.uk




Afternoon Tea and Homemade Cakes
Stone Village Hall : 3pm to 5 pm
29th September /
27th October / 24th November
Proceeds to Action Medical Research

☀️ Cuddington Sunshine Club ☀️

Open to Senior Citizens in Cuddington and surrounding villages. Activities include monthly Tea and Card Games in Cuddington Playing Fields Clubhouse, bi-monthly Matinee Cinema in the Bernard Hall, Coach outings, a Summer Garden Party and a Christmas party.

Next events:

2nd September – Tea and card games 2pm
16th September – Matinee Cinema – The Lost King

For more information telephone Angela Wenham 01844 291932
or email apdwenham@gmail.com

VOLUNTEERS NEEDED

Would you like to help put the parish magazine together?

We are looking for one or two volunteers to join our editorial team and help with preparing the magazine for print on a monthly basis. You'll need a PC/Laptop.

Our local and friendly team meet once a month over Zoom.

Please Contact Us For More Information

✉️ david@pickupandscott.co.uk



Updates on:



Café in the Park runs every Tuesday from 11am to 1pm at the Jubilee Pavilion whatever the weather - rain, hail, wind or sunshine!

Each week people come from all over Stone, Bishopstone, Fairford Leys and beyond. It is open to anyone and everyone, from childminders with babies/toddlers up to those of more mature age – all are welcomed by a fantastic team of volunteers. Friends meet up with each other and first timers are soon chatting away. We have found people are coming earlier and staying longer – so we are now up to 5 big tables on a quiet week! The volume of chatter is loud. For many it has become an important part to their week and offers a break from difficult home circumstances.

Food is obviously at the heart of the Café – with homemade bakes and soups, along with jacket potatoes with fillings and salad or crumpets with cheese and marmite or both!

Over the summer we have used the outside tables and shaded tables to cater for extra families visiting the playground. The plate of cakes on each table seem to attract the kids!

Massive thanks to the Tuesday volunteers and the team of bakers making different bakes each week.



Little Wrigglers started on 18th April – would anyone come??
Yes was the answer.

We have a core group of children attending each session – averaging 13 children. Most come with a parent, others with nannies or grannies. In total we have had 38 children come through the doors in the 13 weeks we have been running. Mostly from Stone but also Bishopstone, Fairford Leys and beyond.

First timers come in very shy but by week 2/3 they are loving it! Free play, tidying up, Bible story, snacks and singing – what more could children want. And the adults get homemade cakes carried over from Tuesday Café – thx bakers!

Thanks to the amazing team of volunteers who give up their time – we restart on Thursday 5th September from 9.00am – 10.30am in the Jubilee Pavilion.

We would love to have a few more volunteers on board – could you offer your time?

Café in the Park - Tuesdays either weekly, fortnightly or monthly. Or on the baking rota.

Little Wrigglers – Thursdays either weekly, fortnightly or monthly.

Please get in touch with Naomi on 0742 5140887 or naominz@hotmail.co.uk

Food Bank Collection

The Seven Stars in Dinton has a foodbank collection box situated under the tall table on the patio adjacent to the entrance of the pub. All foodstuff will be collected by the Bernwode bus on the first Saturday of each month and delivered to the Aylesbury Vineyard Church foodbank. Please donate any kind of tinned food or food in jars. You could also give toiletries or household goods.



STARVEALL FARM BUTCHERS

THE LOCAL BUTCHERY SHOP ON YOUR DOORSTEP

You can order online for local delivery or collection

Visit our website for more details:
www.starveallbutchers.co.uk

Starveall Butchers, Starveall Farm, Oxford Road, Upton, Aylesbury, HP17 8PZ

Windmill Services

PROPERTY MAINTENANCE
& GENERAL BUILDING WORK

Telephone: 01844 279519
Freephone: 0800 7837194

Email: windmill2@btinternet.com
Website: www.windmill-services.co.uk

Simply Walk in Stone, Haddenham & Dinton

Come suited & booted for whatever the weather
To **Simply Walk** for an hour or so in the countryside
Just come to our walks throughout the year from:

Methodist Chapel, Eythrope Road – **STONE**
Wednesday: 4th and 18th September

Bradmoor Farm (rear) car park, Stanbridge Road – **HADDENHAM**
Wednesday: 11th September

Seven Stars PH, New Road – **DINTON**
Wednesday: 25th September

We meet in the morning for 10.30
It's friendly, fun and **free**
Crops cut and hedgerows filling with bounty
To scrump en route before coffee or tea!

Walking for Health with Simply Walk

Visit www.buckinghamshire.gov.uk/simply-walk
Telephone 01494 475367 Mobile 07802 260812.



WE WILL BE WORKING IN THE CHURCHYARD COULD YOU HELP US?



EVERYONE IS WELCOME

10AM TO 1PM ON THE 3RD SATURDAY IN THE MONTH
Next session is on Saturday 21st September, weather permitting.



We would like to tidy the graves, clear the banks along Bishopstone Road and Churchway, plant some flowers and generally make the churchyard look great!

If you can help then please just come along, you can always make coffee if you want to join us but find the gardening tiring.

If you want a chat about this please contact Sue
 s.birrell@stonedintonhartwell.com |  01296 338163

Future dates: 21st September, 19th October, 16th November



SOCIALLY CRAFTY MEETS EVERY 3RD MONDAY OF THE MONTH

**(excepting Bank Holidays)
10.30am - 12.30 in St John the Baptist Church, Stone**

SJB

COME ALONG AND:

- **Make friends**
- **Drink Coffee**
- **Eat Cake**
- **Do Crafts if you want**
- **Learn something new**
- **Share your talents**



EVERYONE IS WELCOME

There is no commitment to come every month – just come when you can and join in.

**REMEMBER THOSE PUMPKIN SEEDS YOU BOUGHT EARLIER THIS
YEAR? YOU'VE COSSETED THEM ALL THE SUMMER AND NOW
COMES THE DAY OF RECKONING!
PREPARE FOR THE GREAT MOMENT**

IT'S MEASURING TIME !

LOAD UP YOUR WHEELBARROW

and come along to the **METHODIST CHAPEL**

SATURDAY 5th OCTOBER

TEA & CAKES from 2 p.m.

Donations for FLORENCE NIGHTINGALE HOSPICE

THE GREAT MEASURE @ 4 p.m.

PRIZE FOR LARGEST CIRCUMFERANCE [NOT weight]

Measured and judged by that doyen of the pumpkin world: MR PATRICK LAMBERT



**EVEN IF YOU DIDN'T GROW A PUMPKIN
DO COME ALONG FOR A FUN AFTERNOON AND TO SUPPORT
OUR VERY OWN LOCAL HOSPICE - "FLORRIE'S"**

A reminder of the road closure dates for the A418 Oxford Road as notified by High Speed Two (HS2) in last month's magazine (Coldharbour roundabout, Fairford Leys to The Bugle Horn, Stone)

Friday 18 October 8.30pm to Monday 21 October 5.30am
(this is a contingency weekend – to be confirmed)

Friday 25 October 8.30pm to Monday 4 November 5.30am (1 week closure)

Friday 15 November 8.30pm to Monday 18 November 5.30am
(this is a contingency weekend – to be confirmed)



Café
IN THE PARK



**HOT & COLD DRINKS, HOME BAKED
CAKES, LITE BITES AND MUCH MORE
NO CHARGE FOR REFRESHMENTS
DONATIONS ARE WELCOME**

**EVERY TUESDAY
11.00AM – 1.00PM**

**Cakes, cheesy crumpets,
soup, jacket potatoes with
toppings and side-salad
homemade soup**

SATURDAYS

****The Saturday café is
taking a break in
September and will be
back Saturday 5th
October****

**JUBILEE PAVILION, STONE RECREATION GROUND
RUN BY ST JOHN THE BAPTIST CHURCH, STONE
THE LOCAL CHURCH IN THE COMMUNITY,
SERVING THE COMMUNITY**



SJB

**For the whole community to meet friends, make new friends or just come and
enjoy the Park while having a cuppa.**

Local 'Cinema' dates

Did you know about the local film screenings in Haddenham and Cuddington – several films to see every month and not too far to travel!



See the Village Calendar at the back of the magazine for dates and film titles.

Stone Methodist Chapel
Eythrope Road, Stone HP17 8PH

Minister: Revd. Hee Gon Moon
heegon5@gmail.com



Village contact: Mrs. Sue Spinks
Clowesbourne, Upton, HP17 8UA
royandsue1@btinternet.com
01296 748369

The Chapel with heart, at the heart of the village
WELCOME TO WORSHIP EACH SUNDAY @ 11 am

Village friends and amenities continue to be prayed for week by week,
and through the five Sundays of September these will be remembered:
Willowmead, Village School, Post Office Shop, Service Station
Sports & Social Club and Hospitality Venues

* * * * *



Join in singing well loved hymns at the united



SONGS OF PRAISE SERVICE

11 am SUNDAY 29th SEPTEMBER



* * * * *

Advance Notice:.....

HARVEST THANKSGIVING - 13TH OCTOBER



Storecupboard gifts welcome - for the local **FOODBANK**



COUNTDOWN FOR FAMILY SHOEBOXES FOR CHRISTMAS :
ONLY 65 DAYS LEFT TO to 4th November the date when they are due to be collected for distribution by **LINK TO HOPE** in Ukraine, Romania, Moldova and surrounding countries

This month let's concentrate on sending fun in our shoeboxes! Look out for games and toys – maybe a yo-yo, skipping rope, mini draughts or dominoes, pack of playing cards/Snap, finger puppets, small balls, set of marbles – the limit is your imagination! – but think small, it has to fit in a shoebox, remember.

And a reminder to save shoeboxes from any new shoes you buy! Most shoe shops are also happy to let you have spare shoeboxes – which I welcome for packing donated items.

*Please get in touch with me if you would like further information and do access the **LINK TO HOPE** website yourself for lots of interesting news.*

SUE SPINKS, Clowesbourne, Upton, HP17 8UA

Email: royandsue1@btinternet.com (preferred, please) Tel: 01296 748369

**WELCOME TO
FOURTH TUESDAY FELLOWSHIP
[non denominational]
MEETING monthly at METHODIST CHAPEL
each fourth Tuesday @ 2.30 p.m.**

**TUESDAY 24th SEPTEMBER
HARVEST TIME**

*with harvest hymns and some thoughts
about a harvest love story - from the Bible!*

Now who could that be? Come along to find out.... and

TO MEET FRIENDS



AND MAKE FRIENDS

STONE THURSDAY CLUB
is for the over-60s – especially those who live alone
or find it difficult to get about –
if this is YOU do come along
Contact Dee James [747671] for transport

Subs are just £2 per meeting

THURSDAY 12th SEPTEMBER -



Are there any benefits I might be entitled to?
What's an Enduring Power of Attorney –and should I
have one?
Is there someone who could help with my housework/my
garden?
How do I find a hairdresser/chiroprapist who'll visit me at
home?

Our visitor this month is from **AGE UK** (formerly *Help the Aged*) who will be able
to answer all these and more of our questions – or direct us to someone who can
– so please come prepared with queries of your own!

Then, of course, our usual delicious tea and cakes

COME ALONG AND BE PART OF THE WORLD'S BIGGEST COFFEE MORNING



SATURDAY 14th SEPTEMBER
10.30 – 3.30
AT THE METHODIST CHAPEL
Eythrope Road
Fresh coffee : Lunchtime Toasties
Cream Teas

For MACMILLAN CANCER RESEARCH



Waterperry Gardens



September at Waterperry

Visit our gardens to see our famous herbaceous border in all its late summer glory as it bursts back into life with a beautiful display of Michaelmas Daisies (Asters). This is also the time of year to start thinking about bulb planting for that glorious show of colour we all look forward to in the spring. Waterperry starts the planting season in style with an extensive variety of plants, seeds & bulbs available.

Waterperry House Open Weekend: Sat 31 Aug & Sun 1 Sep 10am-5.30pm A chance to meet the owners of Waterperry Estate, the School of Philosophy and Economic Science. A varied selection of lectures, talks, and tours throughout the 'open house' weekend. There will also be opportunities to have guided tours of the Frescoes and other areas of the house throughout the day in addition to tours of the ice house. No pre-booking required, entry to the house is included in your garden entry for this special weekend.

National Garden Scheme Open Garden Tuesday 17 September

www.waterperrygardens.co.uk

Quality care you can trust in your own home



**Our care is
person-centred**

**All CareGivers
are introduced
in advance**

**Our care calls
are never rushed**

**From one-hour
minimum up to
24/7 live-in care**

- Companionship
- Transportation
- Meal Preparation
- Housekeeping
- Hospital to Home
- Holiday & Respite
- Dementia Care
- Personal Care
- Live-in Care

Inspected and rated

Good



01296 798910

rightathome.co.uk/aylesburyvaleandchiltern
aylesbury@rightathome.co.uk

**Right
at
Home®**
Quality Care in Your Home

DINTON VILLAGE HALL FOR HIRE



***Suitable for all types of parties, get-togethers
classes and events. Wi-Fi facilities are now available.***

For all enquiries, please contact the Bookings Secretary
Honor Vane, Summers Cottage, Dinton HP17 8UG | 01296 748177
honorvane@hotmail.com

JUBILEE PAVILION

WWW.JUBILEEPAVILION.CO.UK



- Great venue for village activities, fund raising events, parties and groups.
- Includes a well-equipped kitchen with cooker and fridge.
- Changing rooms with hot showers for recreational hire.
- Car park with easy access.

For availability and booking enquiries contact Angela
Email: clerk@sbhpc.org or visit
<https://www.sbhpc.org/Jubilee-Pavilion/Jubilee-Pavilion-Home>

Pearson Insurance Services

Established in 1996

Local Independent Insurance Brokers in Cuddington



PROPERTY OWNERS



LIABILITY



PROFESSIONAL
INDEMNITY



TRADESMAN



HOUSEHOLD
including thatch
and wychert



MOTOR



WORKING
FROM HOME



PERSONAL ACCIDENT
& SICKNESS

and more...



Sandra, Corran & Becky

ARE HERE TO HELP YOU

01844 260936

www.pearson-insurance.co.uk

Sandra@pearson-insurance.co.uk

Corran@pearson-insurance.co.uk

Becky@pearson-insurance.co.uk

Authorised & Regulated by the Financial Conduct Authority FRN 304393

M. SIMMONDS

Decorating Contractors

A Complete Painting & Decorating Service

Top rated, award winning, local family business, known throughout the parish for their high quality workmanship and

www.msimmonds.co.uk

Office: 01296 655774

Mobile: 07850 499795

Email: michael@msimmonds.co.uk

Established since 1979

Celebrating 45 years of Success

Celebrating 40 years of Success



Craftsmen Decorators
Carpentry & Repairs
Refurbishment

PHOTO CALL!!!



If you have any photographs of local scenes that may be suitable for inclusion in a future issue of the Parish Magazine or for the front cover, please send a copy to the editor, David Pickup email david@pickupandscott.co.uk

VILLAGE

TREE SURGEONS

Felling, Shaping & Reductions
Hedges Large or Small
Garden Clearance

Fully Insured, Qualified Professional
with over 15 years experience

Available to give prompt,
FREE QUOTES for all aspects of
tree surgery & ground maintenance

Contact Aaron Poulton:

T: 01296 748576

M: 07545 543037

E: villagetreesurgeons@icloud.com





**2025
Short Breaks
& Holidays**

**Online & Available to book
NOW!**

Visit www.crusader-holidays.co.uk

*More being
added weekly!*

**Crusader
Holidays**
Part of the
Mott's Travel Group

HEIMDALLR DRONE SOLUTIONS

Our drones can complete a wide range of aerial services from, roofing and chimney inspections, general building inspections, church and spire inspections, real estate aerial photography and videography, construction site aerial data collection, infrastructure inspections, not excluding social events.



Our fully insured drones and Civil Aviation Authority approved operators offer a wide range of services in the aerial drone photography and videography workspace.

Heimdallr
Solutions Limited

Contact: Will Hughes
E: will@huav.co.uk M: 07834 087960
www.huav.co.uk

VILLAGE ENVIRONMENTAL SERVICES

Proprietor: Dennis Cook

BLOCKED DRAINS CLEARED

REASONABLE RATES

**NO EXTRA CHARGE FOR EVENING, WEEKEND OR BANK
HOLIDAY CALL-OUTS**

24 HOUR POLITE, COURTEOUS SERVICE

C.C.T.V. DRAIN SURVEYS

9am-6pm

Tel: 07850 635 844

All other times

01296 624221

Full Public Liability Insurance

DOMESTIC DRAIN SERVICE

extremeclean.co.uk

Superior Cleaning and Application of Protectors

Carpet, Upholstery, Leather
Modern & Oriental Rugs
Curtains

Tile & Grout/Stone Flooring
Anti-Allergen Treatment
Specialist Stain Removal
Wood Floor Refinishing

Paul Brooker
35 Place Farm Way, Monks Risborough
Bucks HP27 9JJ

T: 01844 346379 / 344735
M: 07866 376934 E: jjjp@uwclub.net

www.extremecleanco.uk.com

Windmill Landscapes

(Thame based)

Your Local Landscape Company

Established 1989

Landscaping

- Grass Cutting
- Turfing/Seeding
- Hedge Cutting
- Fencing—All Types

Construction

- Patios
- Drives/Paths
- Gates—Wood/Metal
- Groundwork

Tel: 01844 279519

Freephone: 0800 783 7194

www.windmill-landscapes.com

**ARE YOU LOOKING FOR A VENUE
FOR YOUR GROUP/MEETING/
CHILDREN'S PARTY**



LOOK NO FURTHER!

**The Chapel Hall is available for
hire at very reasonable rates**

Electric cooker/kettles/cutlery/
crockerly all on site.

**Please contact Sue Spinks on 01296
748369 royandsue1@btinternet.com**

STONE VILLAGE HALL



**50 Oxford Road, Stone, HP17
8PB**

This large well-equipped hall with stage, kitchen and committee room in the centre of Stone is available for single or regular lettings. Suitable for meetings, events, parties and receptions.

Disabled access

For information and bookings telephone:
01296 748 279

Parish News Advertising

Should you contact any of the advertisers, please mention the Parish News.

Should you be interested in advertising your services in the Parish News, please contact
Sue Unwin

Email: sunwin1958@hotmail.com
Telephone: 07760 177599

NEWSPAPER AND MAGAZINE
DELIVERY SERVICE

DELIVERIES TO HADDENHAM AND
SURROUNDING VILLAGES

HADDENHAM

NEWS DIRECT

4 STATION ROAD, HADDENHAM
HP17 84J

TELEPHONE 01844 291341
WWW.HADDENHAM-NEWSDIRECT.CO.UK



Bishopstone Village Hall

NO LONGER BISHOPSTONE'S BEST-KEPT SECRET

Newly Refurbished and Available To Hire

An elegant and well-equipped venue
in a convenient location available to
hire at reasonable rates

Parties • Meetings • Classes • Events

Moreton Lane, Bishopstone HP17 8SQ
www.bishopstonevillagehallbucks.co.uk
01296 747773 and on facebook
Registered Charity No. 264370

ARBOCARE TREE SURGERY LTD

Qualified and Experienced Arborists

- Established over 25 years
- Contractors to the National Trust
- Crown reductions
- Thinning
- Felling
- Hedge Trimming
- Stump Grinding
- Decay Detection & Tree Reports

Free phone: 0808 1555815

Mobile: 07778811136

www.arbocare.co.uk

Mark's Computer Services In Bishopstone

PC and Laptop Repairs

Computer Running Slow?
Computer will not start?
No Internet or email?
Replacement or Upgrade advice?

An Annual Service helps to keep your computer healthy. Plus get free monitored Security for added peace of mind.



Telephone 01296 823009

Mark is local with 30 years' experience.

Don't get scammed. If you suspect anything, a call, an email, or website. Call us. We can tell you immediately, if something is not right.

T&B Private Hire

01844 261116

07831 882694

trevorjbailey@googlemail.com

Air-conditioned cars and MPVs available for all occasions.

For details of rates and availability, please get in touch.

Bishopstone Blooms

**Beautiful Organic English Flowers
Grown Locally in Bishopstone**

Weddings / Funerals / Bouquets

Gift Vouchers

Floristry one 2 one tuition

Workshops & Classes

🐦 Subscription Flowers from £16 a week - get fresh British Flowers delivered locally - check out the website



07932 606536 / 01296 709017

www.bishopstoneblooms.co.uk

deborah@bishopstoneblooms.co.uk



Quit 4 life

Is it time for YOU to give up smoking?

There are many ways in which you can choose to quit smoking. Whether it be nicotine patches, nicotine gum, smoking inhalators, or electronic cigarettes.

What is important is that you are ready to quit smoking. You want to stop smoking because YOU want to, not because someone is nagging you.

Stopping Smoking is whatever method you feel is right for you and that will give you the best chance of success.

Hypnotherapy can make you a non-smoker

You just need to be committed to becoming a non-smoker.

Hypnotherapy can make you a non-smoker

You just need to be committed to becoming a non-smoker.

You wish to be free from your smoking habit, you never want to have a cigarette again, you never want to think about smoking again.

YOU want to be a Non-smoker, I can help, it will take 2 hours of your time.

Make 2024 the year to

Stop Smoking

One off session £250.00

Approx. 20 packs of cigarettes

Note: With an optional follow-up session included in the price.

Call Debbie

M: 07740 348479

Starbank House
Integrative Therapy

Starbank House, Stars Lane, Dinton,
Bucks HP17 8UL

www.starbankhouse.com

E: debbie@starbankhouse.com

Starbank House
Integrative Therapy

Make today the day to change the rest of your life.

Here are some of the areas I can help you with:

Giving up smoking / Weight management or body image issues / Self-confidence & self-esteem problems / Sleep issues / Fears or phobias / Unwanted habits / Headaches / Relaxation / Anxiety & panic attacks / Stress or depression / OCD / Learning and memory / Anger, guilt or limiting beliefs / Regressional Hypnoanalysis / Anger, guilt or limiting beliefs / Grief / PTSD, Trauma.

I also work with children 12 years upwards.

I am qualified in
Counselling & Psychotherapy
Hypnosis

CBT (Cognitive Behavioural Therapy)

NLP (Neuro Linguistic Therapy)

EMDR (Eye Movement Desensitisation Reprocessing)

Call Debbie today on 07740 348479

For further information go to

www.starbankhouse.com

E: debbie@starbankhouse.com

KUTICLE

Beauty Treatments

Receive **£5.00 off**
any beauty treatment
when you bring this advertisement.

One £5.00 off per person in any 12 month period.

For further information go to
www.kuticle.com

Call Debbie
M: 07740 348479

Starbank House, Stars Lane, Dinton,
Bucks HP17 8UL

www.kuticle.com

E: debbie@kuticle.com

COMMUNITY DIARY - A guide to what's on around you!

September 2024

1	Church Services
2	Cuddington Sunshine Club - Tea and Card games
3	Tuesday Café In The Park, Stone 11am-1pm
4	Simply Walk
5	
6	EYAI Community Café, Stone, 1-4pm
7	Haddenham Library - Talk by Dr Kate Kennedy (www.haddenhamcommunitylibrary.org.uk) [There is no Saturday Café in the Park in September]
8	Church Services
9	
10	Tuesday Café in the Park, Stone, 11am-1pm Haddenham U3A meeting Haddenham Screen at Haddenham Village Hall 'Swede Caroline' film Cert 15 at 8pm
11	Simply Walk
12	Thursday Club Cuddington Picture House - National Theatre Live Cert 15 Prima Facie 7pm
13	EYAI Community Café, Stone, 1-4pm
14	Dinton Churchyard Working Party Macmillan Coffee Morning at the Methodist Church
15	Church Services
16	Socially Crafty, St John the Baptist, Stone, 10.30am-12.30pm Cuddington Sunshine Club - Matinee Cinema 'The Lost King'
17	Tuesday Café In The Park, Stone 11am-1pm
18	Simply Walk
19	Cuddington Picture House - The Fall Guy Cert 12A
20	EYAI Community Café, Stone, 1-4pm
21	Garden Tidying Session at St John the Baptist, Stone, 10am
22	Church Services
23	
24	Tuesday Café In The Park, Stone 11am-1pm Tuesday Fellowship 2.30pm Haddenham Screen at Haddenham Village Hall 'The Fall Guy' Cert 12A 8pm
25	Simply Walk
26	Cuddington Picture House - Back to Black Cert 15
27	EYAI Community Café, Stone, 1-4pm
28	
29	Church Services Afternoon Teas in Stone Village Hall for Action Research 3pm
30	



HARTWELL HOUSE HOTEL & SPA



GUSBOURNE ENGLISH WINE DINNER AT HARTWELL HOUSE

FRIDAY 6TH SEPTEMBER

Celebrate the wines of one of England's most renowned and innovative winemakers with a four-course dinner with paired wines to match each course. Situated in Appledore, Kent, Gusbourne first planted vines in 2004 with a vision to create the finest vintage wines using grapes exclusively from their own vineyards. Today they offer a diverse portfolio of exceptional wines.

£130 per person.

Advance booking necessary.

Did you know we also sell Gift Vouchers, the perfect gift for someone who has everything.

For further information, head over to hartwell-house.com



Hartwell House Hotel & Spa, Oxford Road, HP17 8NR
www.hartwell-house.com | info@hartwell-house.com
01296 747444 | www.historichousehotels.com

